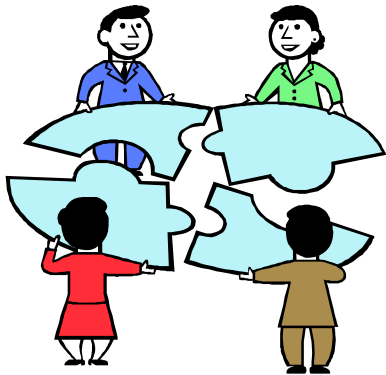


The Alamance-Caswell-Rockingham Local Management Entity (LME) manages services for citizens with mental health, developmental disabilities or substance needs. The LME contracts and works collaboratively with an array of service providers in Alamance, Caswell, and Rockingham counties to ensure services are available to those in need. The LME and our network of providers are committed to providing quality services, while ensuring that your rights are being respected and your privacy is protected.



In addition to monitoring providers to ensure the delivery of quality services, the LME provides access to mental health, developmental disability, and substance abuse services in the tri-county region. Our Screening, Triage, and Referral unit offers both routine and emergency access to services. Our provider network also has resources available to assist in crisis situations.

WHAT TO EXPECT:

During the call, a staff member will ask you a series of questions to determine your unique needs, and to gather basic information about your eligibility for services. After this brief assessment, you will be given the opportunity to make your decision on what course you want to take. This could be visiting crisis/emergency services, receiving a visit from the Mobile Crisis Team or being referred to another agency within our community of providers.

NON-EMERGENCY ACCESS TO SERVICES:

If you or someone you know is in need of Mental Health, Developmental Disability, or Substance Abuse Services call:

Screening, Triage, and Referral Unit (336) 513-4200

*Follow the voice prompts to select English or Spanish
and then Press '2' to be directed to the STR Unit*



EMERGENCY ACCESS TO SERVICES:

If you are currently receiving services and are in an emergency situation you should contact your service provider. As "First Responder", your service provider will have the options for 24-hour emergency response. Your provider will be able to assess your situation and determine if it is necessary for you to seek additional assistance.

If you are not currently receiving services or if your current service provider has determined that you need additional assistance call:

**24-HOUR CRISIS HOTLINE
LOCAL: 336-513-4444
TOLL FREE: 1-888-543-1444**

If you are in a life-threatening situation or having a medical emergency, immediately call 911.

MOBILE CRISIS SERVICES:

Mobile Crisis Management Services are available 24 hours a day, 7 days a week to provide crisis stabilization, interventions, and prevention activities. These services can be accessed after hours by calling the 24-Hour Crisis Hotline. To access these services Monday-Friday from 8:00 AM to 5:00 PM call:



MOBILE CRISIS TEAM (336) 538-1220

WALK-IN CRISIS SERVICES:

Walk-In Crisis Management Services are available Monday-Friday from 8:00 AM to 5:00 PM in all three counties. These services may be accessed at the following sites:



ALAMANCE COUNTY

319 N. Graham-Hopedale Road
Suite A
Burlington, NC 27217

CASWELL COUNTY

339 Wall Street
Yanceyville, NC 27379

ROCKINGHAM COUNTY

730 States Street
Suite B
Reidsville, NC 27230

If you have any questions, comments, or concerns regarding Mental Health, Developmental Disability, or Substance Abuse Services, please call the Alamance, Caswell, Rockingham Local Management Entity (ACR-LME) at 336-513-4200.

For more information, please visit our website at:
www.acmhdds.org



319 N. GRAHAM HOPEDALE ROAD, SUITE A, BURLINGTON, NC 27217

A Guide to Accessing Mental Health, Developmental Disability, and Substance Abuse Services

Main Number: (336) 513-4200
TTY: (336) 513-4298

24-HOUR CRISIS HOTLINE
LOCAL: 336-513-4444
TOLL FREE: 1-888-543-1444